

Divine



THE PATENTED AIRELOOM LIFT™

We've pioneered a natural chamber between the springs and the mattress-top that allows every element to breathe. When the chamber meets the layers of plush material, the bed completely synchronizes with your body. It can only be described as a lift.

Hand tufted design

FABRIC/QUILT

- Ultra-conforming knit with Tencel® and Phase Change Material
- Silk/Wool fibers
- FR fibers
- Pillowflex
- Plush Convoluted foam
- True-Stretch™ cotton backing

COMFORT LAYERS

- Plush Graphite infused Celsion™ TerraPur™ latex
- Luxury firm Advance Micro-touch Coil™ material
- 8 lbs cotton
- Micro Coils 19 gauge
- Slow Recovery Visco Foam
- Total micro coil count:
King 2,400 - Queen 2,080

SUPPORT SYSTEM

- Specially designed high density perimeter support
- 8" Support-flex™ tempered 15 gauge individually wrapped coils
- Perimeter coil count:
King 1,052 and Queen 842

FOUNDATION

- Wood foundation
- 9" or 6" profiles available
- Adjustable base friendly



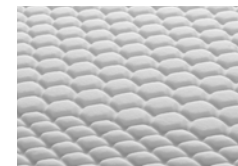
TENCEL® PANEL

Our ultra-conforming knit panel is made with breathable Tencel®. This panel is eco-friendly and incredibly soft to the touch.



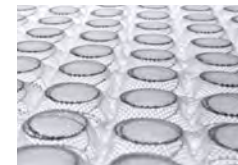
SILK/WOOL

A breathable blend of natural fibers to provide airflow keeps the body cool and dry for lasting comfort.



ADVANCE MICRO-TOUCH COIL™

This material reduces motion transfer and promotes gentle air flow between the micro-touch-points which in turn, will help with temperature regulation throughout the night.



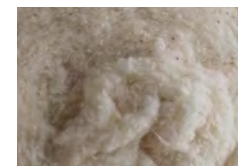
MICRO COILS

19 gauge micro coils increases coil count and brings support to the comfort layers.



TERRAPUR™ LATEX

This hypoallergenic foam has an open cell structure that allows ventilation and even heat distribution.



COTTON

Breathable cotton allows for natural airflow and softness.